



COMPASS  
Queens  
Luxury Report

April 21 - 27, 2025, Residential Contracts \$1.25M+

Photo: [2-17 51st Ave, Unit 913](#)



The Queens luxury real estate market, defined as all properties priced \$1.25M and above, saw 19 contracts signed this week, made up of 7 condos, and 12 houses. The previous week saw 8 deals. For more information or data, please reach out to a Compass agent.

**\$1,755,205**

Average Asking Price

**\$1,650,000**

Median Asking Price

**\$1,053**

Average PPSF

**0%**

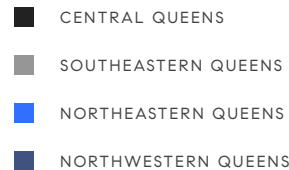
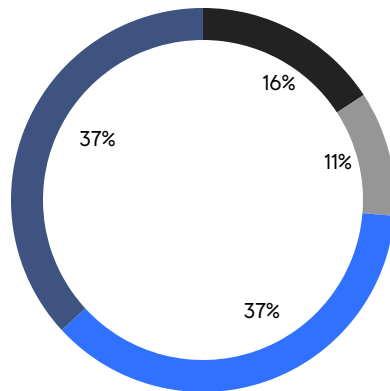
Average Discount

**\$33,348,888**

Total Volume

**71**

Average Days On Market

**7**

Condo Deal(s)

**0**

Co-op Deal(s)

**12**

Single-Family Deal(s)

**\$1,544,286**

Average Asking Price

**\$0**

Average Asking Price

**\$1,878,241**

Average Asking Price

**\$1,505,000**

Median Asking Price

**\$0**

Median Asking Price

**\$1,743,500**

Median Asking Price

**\$1,590**

Average PPSF

**\$712**

Average PPSF

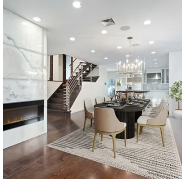
**977**

Average SqFt

**2,637**

Average SqFt





### 70-16 Ingram St

Forest Hills

Contact Signed

Type	House	Price	\$2,800,000	Sq. Ft.	3,720	Beds	5
DOM	43	Initial	\$2,800,000	PPSF	\$753	Baths	4



### 186-20 Troon Road

Jamaica Estates

Contact Signed

Type	House	Price	\$2,795,000	Sq. Ft.	2,825	Beds	4
DOM	42	Initial	-	PPSF	\$989	Baths	5



### 34-41 83rd St

Jackson Heights

Contact Signed

Type	House	Price	\$2,295,000	Sq. Ft.	3,704	Beds	5
DOM	111	Initial	\$2,295,000	PPSF	\$620	Baths	2.5

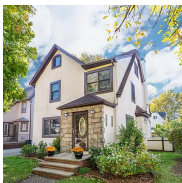


### 303 147th St

Whitestone

Contact Signed

Type	House	Price	\$2,080,000	Sq. Ft.	-	Beds	4
DOM	195	Initial	\$2,080,000	PPSF	-	Baths	4



### 72-28 Ingram St

Forest Hills

Contact Signed

Type	House	Price	\$1,988,000	Sq. Ft.	2,704	Beds	4
DOM	25	Initial	\$1,998,000	PPSF	\$736	Baths	2.5



### 11-36 45th Road, Unit 406A

Long Island City

Contact Signed

Type	Condo	Price	\$1,805,000	Sq. Ft.	1,108	Beds	2
DOM	-	Initial	\$1,805,000	PPSF	\$1,630	Baths	2

Compass is a licensed real estate broker and abides by Equal Housing Opportunity laws. All material presented herein is intended for informational purposes only. Information is compiled from sources deemed reliable but is subject to errors, omissions, changes in price, condition, sale, or withdrawal without notice. No statement is made as to the accuracy of any description. All measurements and square footages are approximate. This is not intended to solicit property already listed. Nothing herein shall be construed as legal, accounting or other professional advice outside the realm of real estate brokerage.





### 182-48 Avon Road

Jamaica Estates

Contact Signed

Type	House	Price	\$1,799,000	Sq. Ft.	2,345	Beds	4
DOM	19	Initial	\$1,799,000	PPSF	\$767	Baths	2



### 24-01 Queens Plaza North, Unit 605

Astoria

Contact Signed

Type	Condo	Price	\$1,710,000	Sq. Ft.	1,090	Beds	2
DOM	-	Initial	\$1,710,000	PPSF	\$1,569	Baths	2



### 25-19 160th St

Flushing

Contact Signed

Type	House	Price	\$1,688,000	Sq. Ft.	2,496	Beds	4
DOM	53	Initial	\$1,688,000	PPSF	\$676	Baths	5



### 11-36 45th Road, Unit PH8A

Long Island City

Contact Signed

Type	Condo	Price	\$1,650,000	Sq. Ft.	909	Beds	2
DOM	-	Initial	\$1,650,000	PPSF	\$1,816	Baths	2



### 85-18 212th St

Oakland Gardens

Contact Signed

Type	House	Price	\$1,560,000	Sq. Ft.	3,200	Beds	5
DOM	49	Initial	\$1,588,000	PPSF	\$488	Baths	4



### 11-36 45th Road, Unit 304A

Long Island City

Contact Signed

Type	Condo	Price	\$1,505,000	Sq. Ft.	817	Beds	2
DOM	-	Initial	\$1,505,000	PPSF	\$1,843	Baths	2

Compass is a licensed real estate broker and abides by Equal Housing Opportunity laws. All material presented herein is intended for informational purposes only. Information is compiled from sources deemed reliable but is subject to errors, omissions, changes in price, condition, sale, or withdrawal without notice. No statement is made as to the accuracy of any description. All measurements and square footages are approximate. This is not intended to solicit property already listed. Nothing herein shall be construed as legal, accounting or other professional advice outside the realm of real estate brokerage.





### 56-05 Oceania St

Bayside

Contact Signed

Type	House	Price	\$1,488,888	Sq. Ft.	1,850	Beds	4
DOM	49	Initial	\$1,488,888	PPSF	\$805	Baths	4



### 29-18 41st Ave, Unit 22C

Astoria

Contact Signed

Type	Condo	Price	\$1,450,000	Sq. Ft.	966	Beds	2
DOM	78	Initial	\$1,450,000	PPSF	\$1,502	Baths	2



### 35-26 208th St

Bayside

Contact Signed

Type	House	Price	\$1,450,000	Sq. Ft.	2,410	Beds	3
DOM	54	Initial	\$1,450,000	PPSF	\$602	Baths	3

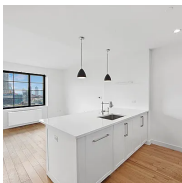


### 133-27 39th Ave, Unit PHM

Flushing

Contact Signed

Type	Condo	Price	\$1,390,000	Sq. Ft.	953	Beds	2
DOM	112	Initial	\$1,490,000	PPSF	\$1,459	Baths	2

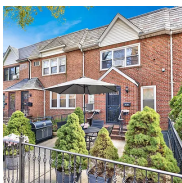


### 27-21 44th Dr, Unit 902

Long Island City

Contact Signed

Type	Condo	Price	\$1,300,000	Sq. Ft.	992	Beds	2
DOM	19	Initial	\$1,300,000	PPSF	\$1,311	Baths	2



### 50-17 40th St

Sunnyside

Contact Signed

Type	House	Price	\$1,300,000	Sq. Ft.	1,828	Beds	3
DOM	187	Initial	\$1,300,000	PPSF	\$712	Baths	1.5

Compass is a licensed real estate broker and abides by Equal Housing Opportunity laws. All material presented herein is intended for informational purposes only. Information is compiled from sources deemed reliable but is subject to errors, omissions, changes in price, condition, sale, or withdrawal without notice. No statement is made as to the accuracy of any description. All measurements and square footages are approximate. This is not intended to solicit property already listed. Nothing herein shall be construed as legal, accounting or other professional advice outside the realm of real estate brokerage.





69-60 181st St  
Fresh Meadows

Contact Signed

Type	House	Price	\$1,295,000	Sq. Ft.	1,920	Beds	3
DOM	24	Initial	\$1,295,000	PPSF	\$674	Baths	3

Compass is a licensed real estate broker and abides by Equal Housing Opportunity laws. All material presented herein is intended for informational purposes only. Information is compiled from sources deemed reliable but is subject to errors, omissions, changes in price, condition, sale, or withdrawal without notice. No statement is made as to the accuracy of any description. All measurements and square footages are approximate. This is not intended to solicit property already listed. Nothing herein shall be construed as legal, accounting or other professional advice outside the realm of real estate brokerage.